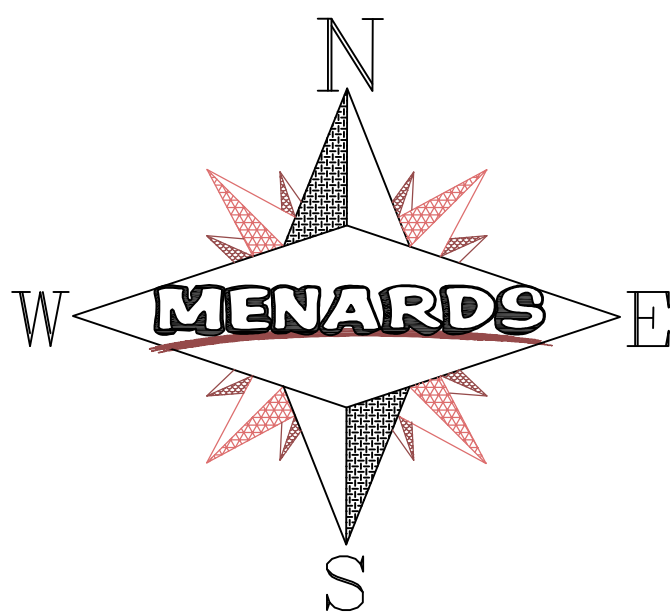
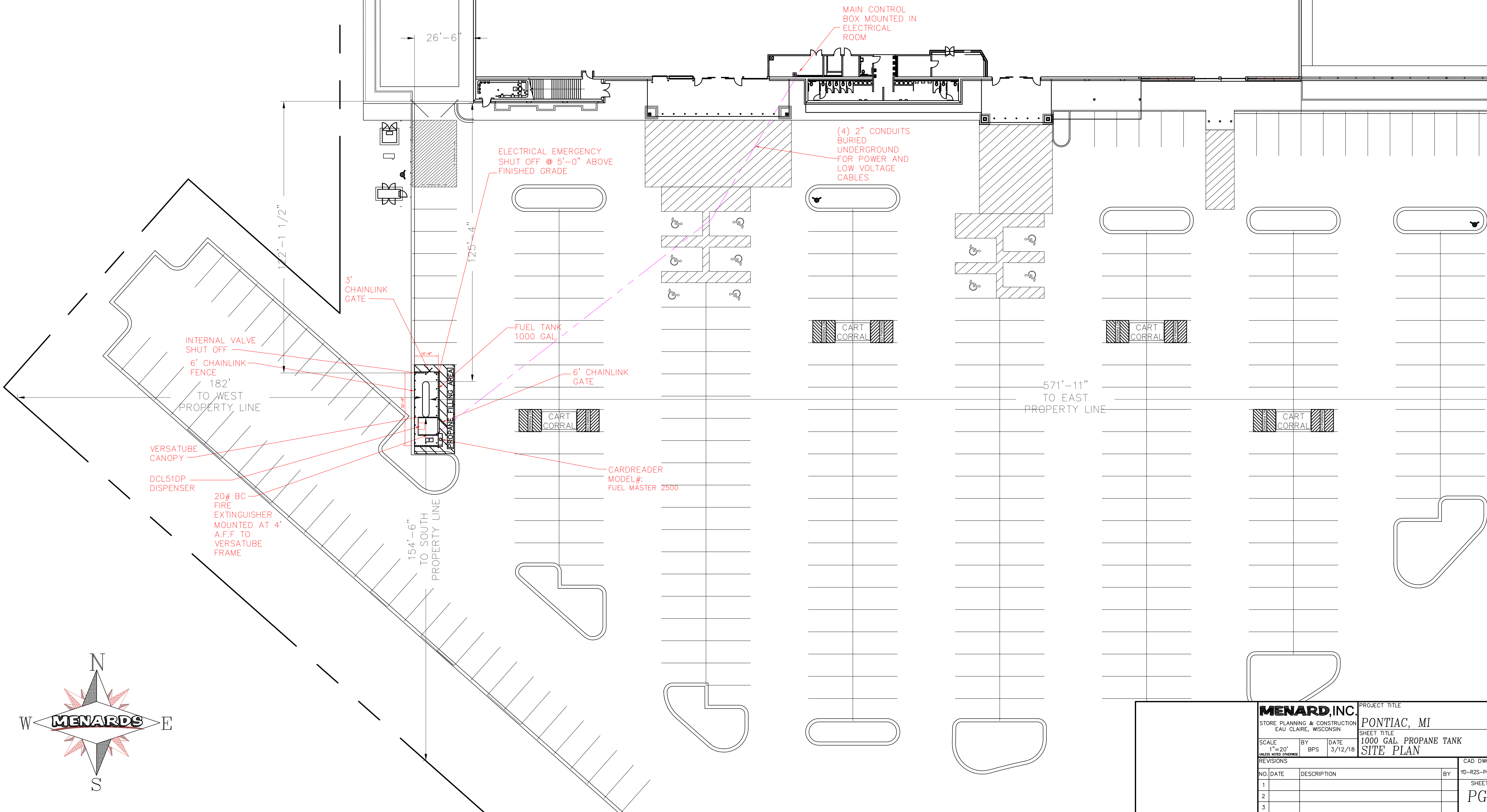


NOTES:  
-SEE PG-2 FOR BOLLARD, CHAINLINK AND VERSATUBE DETAILS.  
-SEE PG-3 FOR ELECTRICAL DETAILS  
-SEE SPEC PACKET FOR TANK, PUMP AND ELECTRICAL SPECS.  
-SEE S-1 FOR STRIPING AND LETTERING  
-SEE SIGN 1-3 FOR SIGN LAYOUT

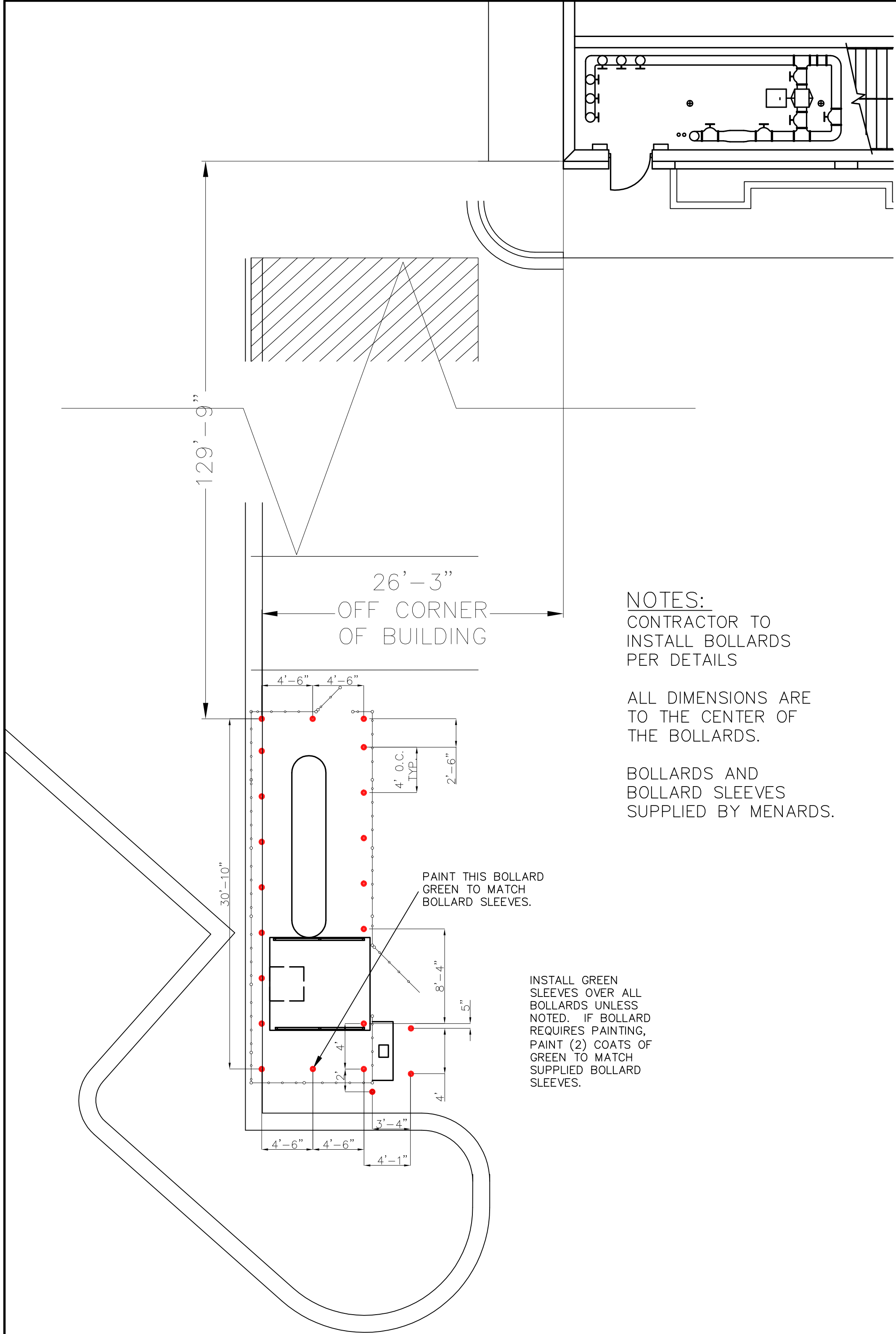


PONTIAC, MI  
NORTH OF SOUTH TELEGRAPH ROAD  
WEST OF HOOD ROAD  
BLOOMFIELD HILLS, MI 48302

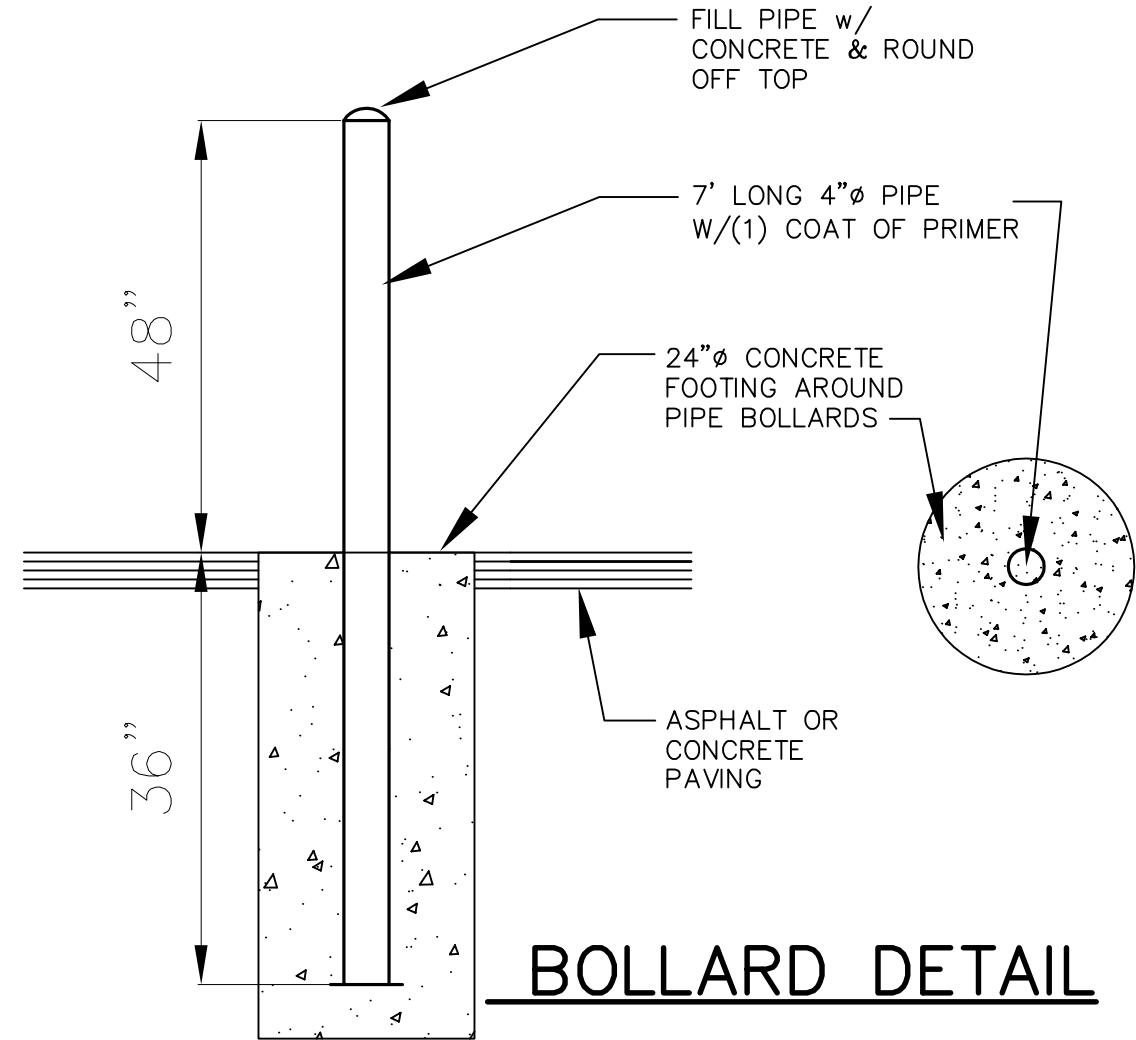
CONTACT AT FERRELL GAS:  
MARK FUELLING  
(260)-740-2482



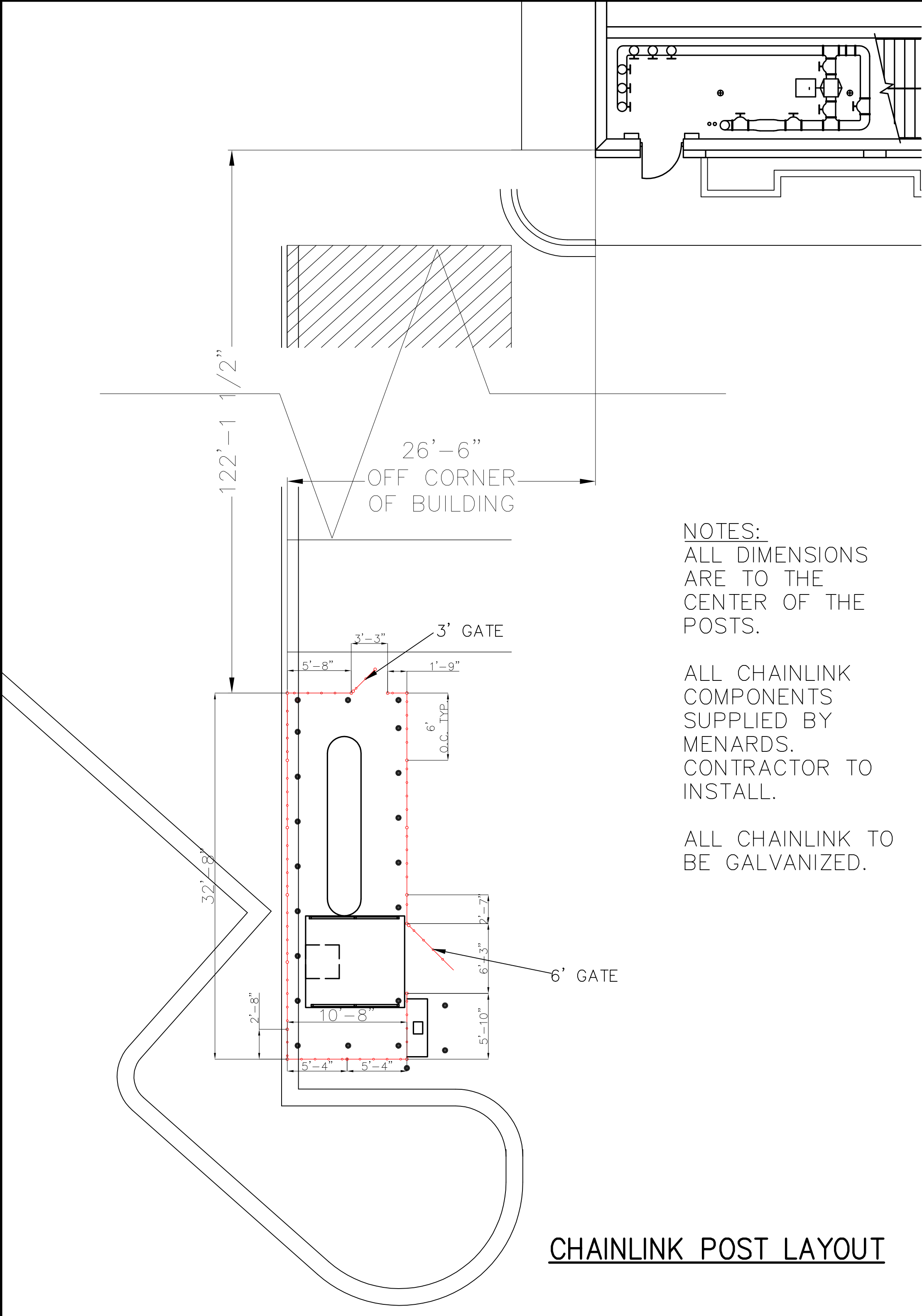
<b>MENARD, INC.</b>				PROJECT TITLE	
STORE PLANNING & CONSTRUCTION EAU CLAIRE, WISCONSIN				PONTIAC, MI	
SCALE 1"=20' UNLESS NOTED OTHERWISE				SHEET TITLE 1000 GAL. PROPANE TANK SITE PLAN	
REVISIONS				CAD DWG NAME YD-R25-PONTIAC-MI	
NO.	DATE	DESCRIPTION	BY	SHEET NO.	
1				PG-1	
2					
3					



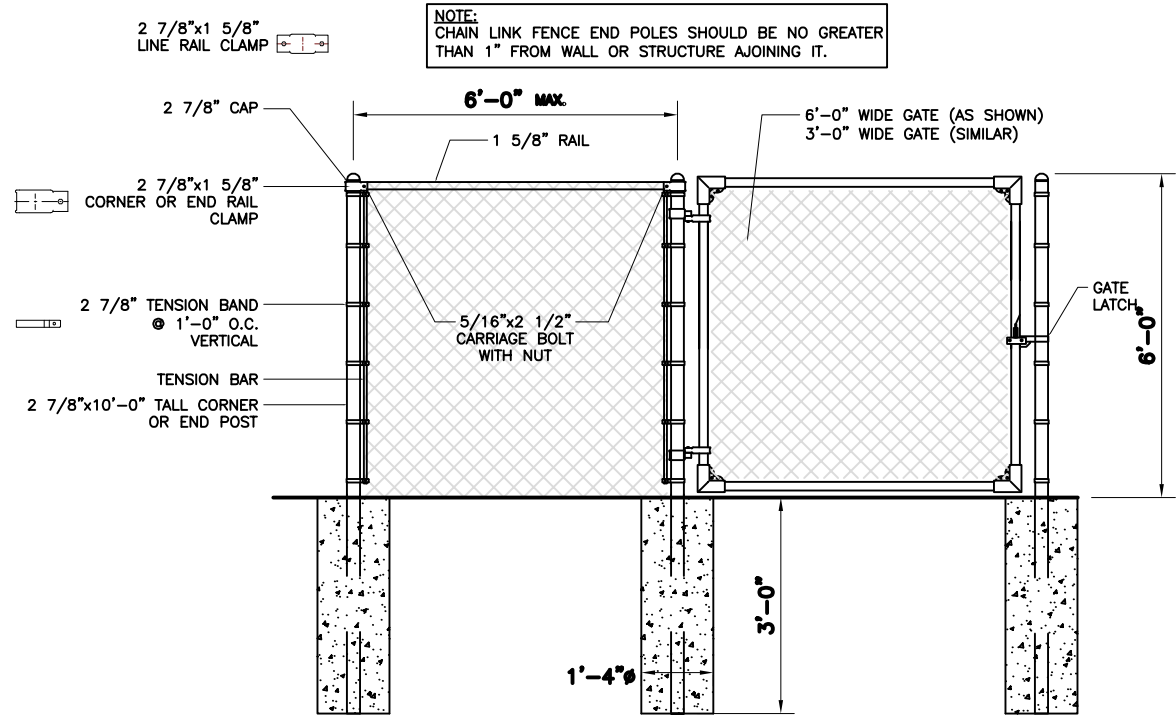
BOLLARD LAYOUT



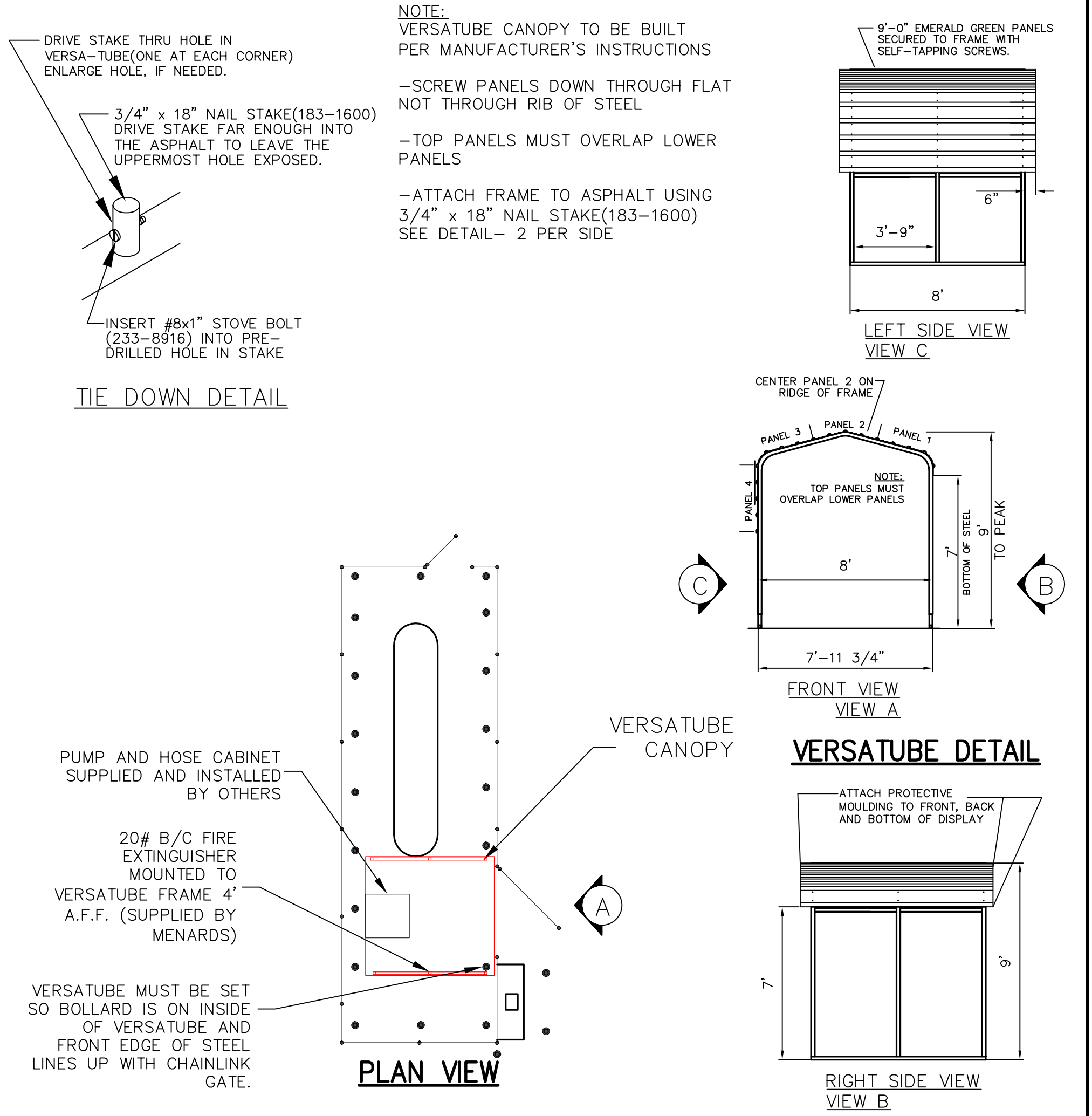
BOLLARD DETAIL



CHAINLINK POST LAYOUT



CHAINLINK GATE AND FENCE DETAIL



TIE DOWN DETAIL

NOTE:  
VERSATUBE CANOPY TO BE BUILT  
PER MANUFACTURER'S INSTRUCTIONS  
-SCREW PANELS DOWN THROUGH FLAT  
NOT THROUGH RIB OF STEEL  
-TOP PANELS MUST OVERLAP LOWER  
PANELS  
-ATTACH FRAME TO ASPHALT USING  
3/4" x 18" NAIL STAKE(183-1600)  
SEE DETAIL- 2 PER SIDE

PUMP AND HOSE CABINET  
SUPPLIED AND INSTALLED  
BY OTHERS

20# B/C FIRE  
EXTINGUISHER  
MOUNTED TO  
VERSATUBE FRAME 4'  
A.F.F. (SUPPLIED BY  
MENARDS)

VERSATUBE MUST BE SET  
SO BOLLARD IS ON INSIDE  
OF VERSATUBE AND  
FRONT EDGE OF STEEL  
LINES UP WITH CHAINLINK  
GATE.

PLAN VIEW

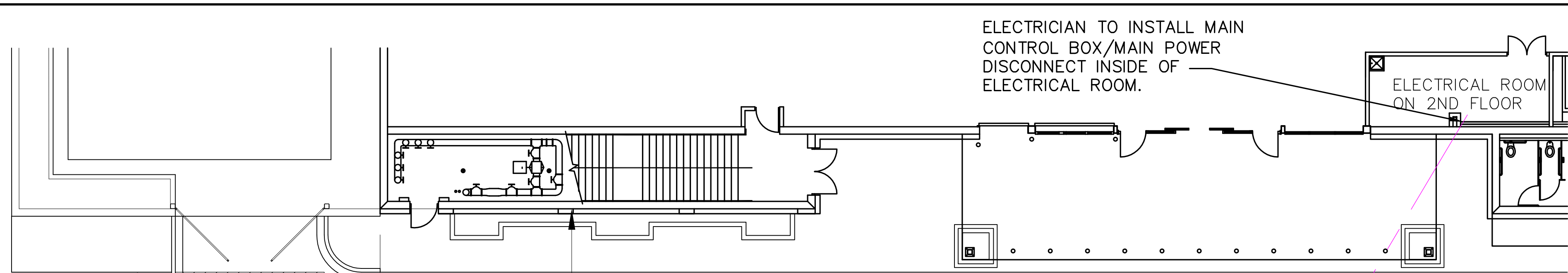
VERSATUBE  
CANOPY

VERSATUBE DETAIL

ATTACH PROTECTIVE  
MOULDING TO FRONT, BACK  
AND BOTTOM OF DISPLAY

<b>MENARD, INC.</b>			PROJECT TITLE	
STORE PLANNING & CONSTRUCTION EAU CLAIRE, WISCONSIN			PONTIAC, MI	
SCALE 3/32"=1'-0" <small>UNLESS NOTED OTHERWISE</small>			BY BPS	
DATE 3/12/18			SHEET TITLE	
REVISIONS			PROPANE TANK DETAILS	
			CAD DWG NAME	
NO.	DATE	DESCRIPTION		BY
1				YD-R25-PONTIAC-MI
2				SHEET NO.
3				PG-2





ELECTRICIAN TO INSTALL MAIN CONTROL BOX/MAIN POWER DISCONNECT INSIDE OF ELECTRICAL ROOM.

ELECTRICAL ROOM ON 2ND FLOOR

- (4) 2" CONDUITS FROM ELECTRICAL ROOM TO LOCATION IN PARKING LOT. CONDUITS TO CONTAIN THE FOLLOWING:
- (1) 460V 3 PHASE FOR PUMP/MOTOR(RUN TO PANEL "S")
  - (1) 120V INSULATED/ISOLATED CIRCUIT FOR CARD READER UNIT (RUN TO PANEL "J")
  - (1) 120V CIRCUIT FOR LIGHT (RUN TO PANEL "S")
  - (1) SINGLE MODE FIBER OPTIC TO NET RACK 1
  - (1) DEDICATED OUTSIDE PHONE LINE

POWER CAN NOT BE ON A CONTACTOR. FIBER TO BE RAN IN IT'S OWN CONDUIT.

#### NOTES:

ALL CONDUIT MUST BE RIGID CONDUIT.

ELECTRICIAN TO SUPPLY ALL WIRE AND BOXES INCLUDING PHONE AND FIBER OPTIC. WHENEVER POSSIBLE THESE ITEMS MUST BE PURCHASED FROM MENARDS.

ALL ELECTRICAL WORK MUST MEET LOCAL, STATE AND NEC REQUIREMENTS.

ALL GAS PIPING TO BE COMPLETE BY OTHERS.

ALL CONDUITS ON BUILDING WALLS MUST BE PAINTED TO MATCH WALL COLOR.

CONDUIT RUNNING TO PUMP WILL BE ATTACHED TO UNISTRUT ANCHORED TO GROUND.

ELECTRICIAN TO HOOK UP POWER, DATA AND CONTROL WIRES TO THE CARD READER, PUMP AND E-STOP UNITS TO PROVIDE A FULLY OPERATIONAL SYSTEM.

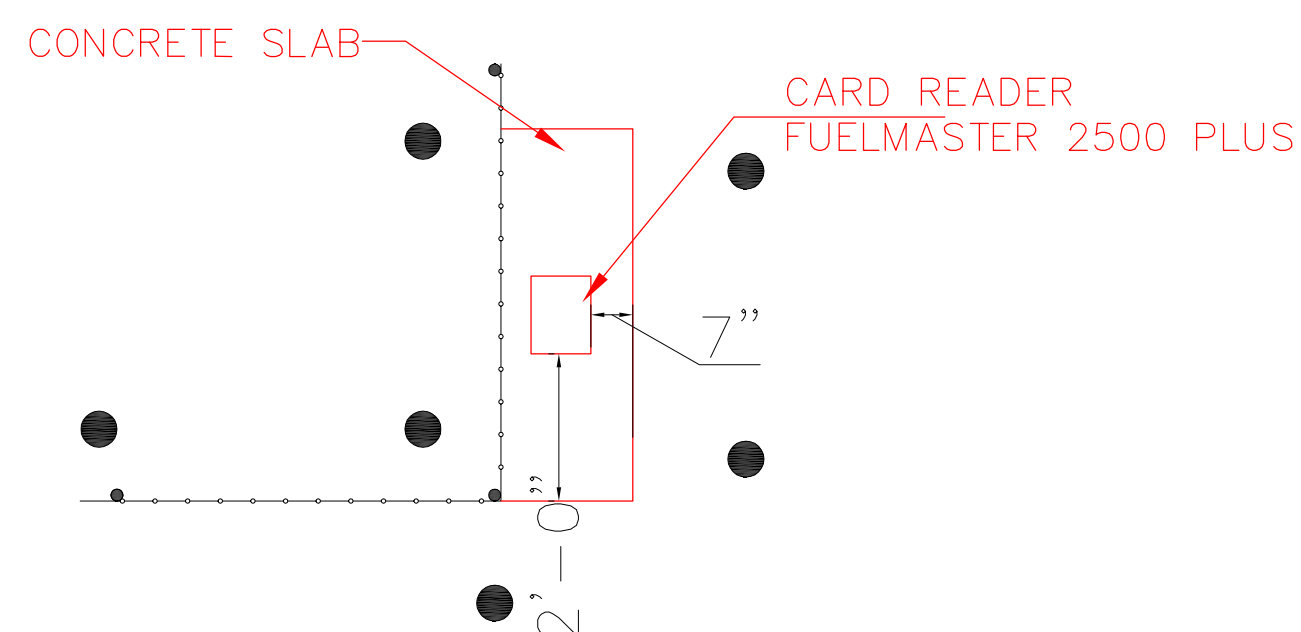
SEE PLAN PG-4 FOR A ELECTRICAL DIAGRAM OF THE TANK AREA.

19'-11" TO C OF STUB  
152'-2" TO C OF STUB

(4) 2" CONDUITS COMING UP FROM UNDER GROUND FOR POWER, FIBER OPTIC, AND PHONE. RUN POWER AND LOW VOLTAGE CABLES TO REQUIRED LOCATIONS. CONDUITS RAN BACK TO ELECTRICAL ROOM.

## ELECTRICAL LAYOUT

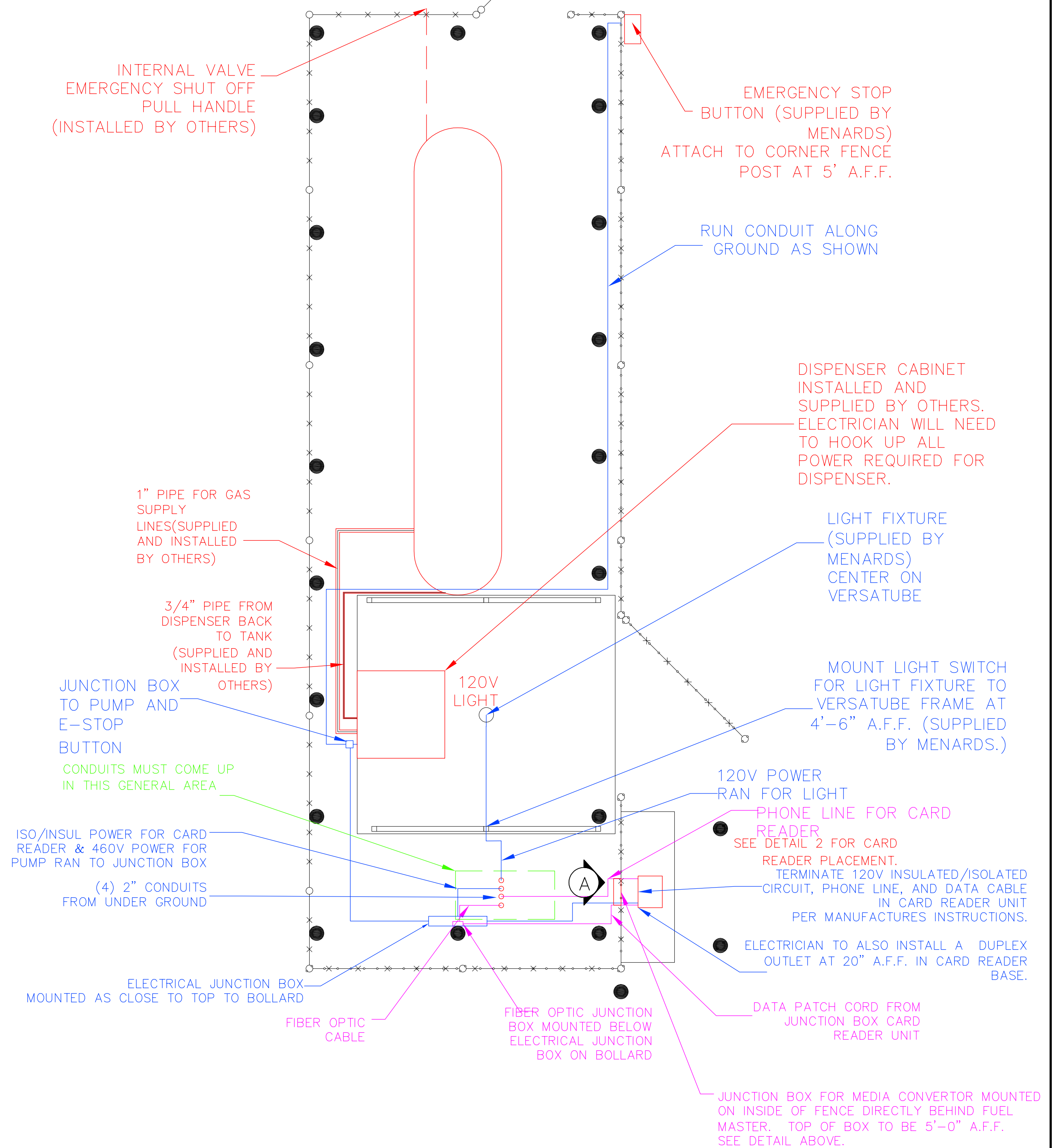
### CARD READER PLACEMENT DETAIL 2



NOTES:  
CONTRACTOR TO SET AND ANCHOR UNIT TO THE CONCRETE SLAB WITH 3/8" WEDGE ANCHORS.

ALL ELECTRICAL COMPONENTS AND INSTALLATION MUST MEET CLASS 1, DIVISION 1 AND CLASS 1, DIVISION 2 REQUIREMENTS

## LAYOUT FOR POWER



#### KEY:

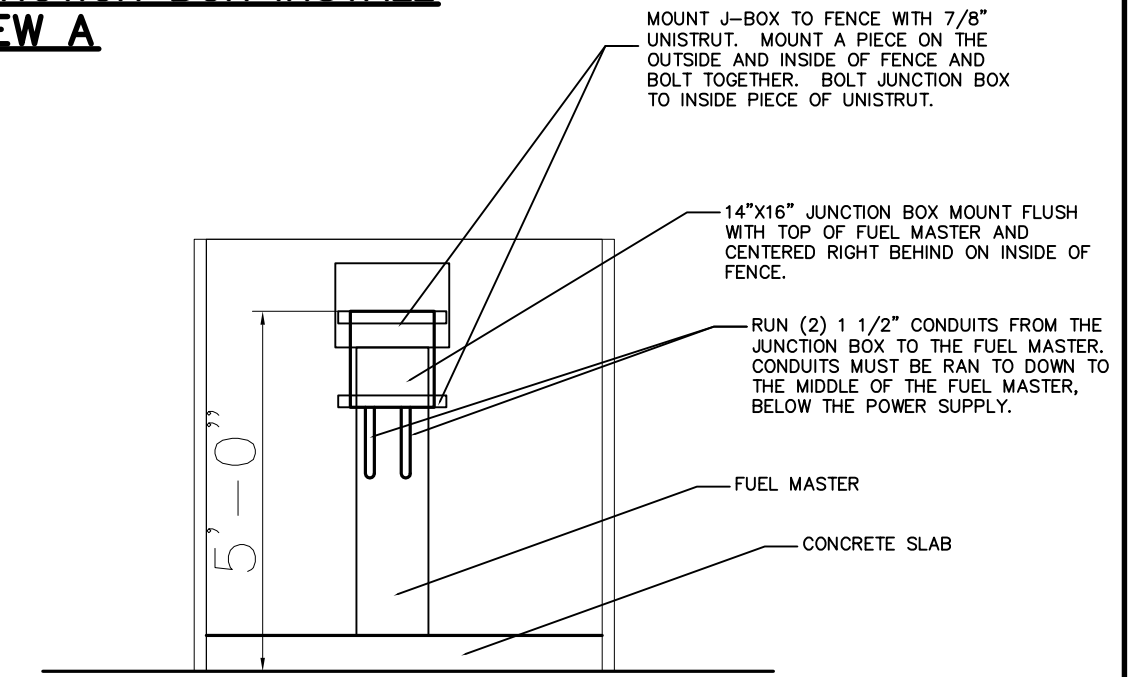
GAS LINE

POWER

LOW VOLTAGE

SEE SPEC PACKET FOR PIPE LAYOUT AND DETAILS

### JUNCTION BOX INSTALL VIEW A



<b>MENARD, INC.</b>			PROJECT TITLE	
STORE PLANNING & CONSTRUCTION EAU CLAIRE, WISCONSIN			PONTIAC, MI	
SCALE 3/32"=1'-0" <small>UNLESS NOTED OTHERWISE</small>			BY BPS	DATE 3/12/18
REVISIONS			SHEET TITLE ELECTRICAL DETAILS	
NO.	DATE	DESCRIPTION	BY	CAD DWG NAME YD-R25-PONTIAC-MI
1				SHEET NO. PG-3
2				
3				

S= SEAL OFF

NOTES:  
ENTIRE AREA NOTED ON THIS PLAN HAS A CLASSIFICATION OF CLASS 1, DIVISION 2  
AREAS BELOW 18" AND WITHIN 5' IN ANY DIRECTION OF A POINT OF TRANSFER TO HAVE A  
CLASSIFICATION OF CLASS 1, DIVISION 1

THE ELECTRICIAN IS REQUIRED TO INSTALL SEAL OFFS IN ACCORDANCE WITH CODE (SECTION 501-15). ALL CONDUIT THAT FALLS  
UNDER 18" MUST HAVE A SEAL OFF AT THE POINT WHERE IT ENTERS AND EXITS THE CLASS 1, DIVISION 1 AREAS. A SEAL OFF  
IS ALSO REQUIRED WHERE CONDUITS ENTER OR EXIT A DISPENSER. ALL CONDUITS INSIDE THE DISPENSER THAT FALL UNDER THE  
18" AREA MUST HAVE A SEAL OFF.

SEAL OFFS ARE REQUIRED ON ALL HORIZONTAL AND VERTICAL CONDUITS WITHIN THE CLASS 1 LOCATION. ALL CONDUITS  
UNDERGROUND THAT RUN UNDER THE CLASS 1, DIVISION 1 AREA ARE CONSIDERED TO BE IN THIS AREA AS WELL AND MUST MEET  
ALL REQUIREMENTS PER CODE (SECTION 515.9).

ALL LOW VOLTAGE AND COMMUNICATION CABLES MUST BE RAN THROUGH A DEDICATED CONDUIT. ALL CABLES AND WIRES MUST  
COMPLY WITH CODE 800.133(A-C)

SEE PLAN PG-3 FOR REQUIREMENTS WHERE CONDUITS ENTER MAIN BUILDING.

REMOTE E-STOP (CLASS 1 DIVISION 1 RATED)

SEAL OFF LOCATED WITHIN 18" OF E-STOP



(S)

1/2" RMC  
120V  
3 #12

1000 GAL. PROPANE TANK

AT BUILDING

AT DISPENSER

(S)

(S)

GRADE

POLY

TRANSITION TO POLY WITH APPROVED  
FITTINGS FROM RMC TO POLY (TYP OF 4)

\*= WIRE SIZE MAY VARY DEPENDING ON RUN LENGTH

J-BOX  
(CLASS 1,  
DIVISION 1  
RATED)

SWITCH  
FOR LIGHT  
(CLASS 1,  
DIVISION 1  
RATED)

120V  
(3) #12  
(1)  
ISO/INSUL  
120V  
CIRCUIT

FUEL MASTER/  
CARD READER

120V  
(6) #12  
(1)  
ISO/INSUL  
120V  
CIRCUIT  
(1) 120V  
CIRCUIT

PATCH CABLE

FIBER BOX

CAT5E  
FOR  
PHONE

FIBER

120V  
(6) #8  
(1) ISO/INSUL  
120V CIRCUIT  
(1) 120V  
CIRCUIT

460V  
3  $\phi$   
3 #10  
1 # 10 GR

GROUND WIRE

2" SEAL OFF REDUCED TO 3/4" RIGID  
2" SEAL OFF

LIGHT  
(CLASS 1,  
DIVISION 1  
RATED)

1/2" RMC

1/2" RMC  
120V  
3 #12

PUMP AND  
MOTOR

(4) #10 460V  
(3) #12 120V

J-BOX  
(CLASS 1, DIVISION 1 RATED)

FLEXIBLE  
CONDUIT  
(CLASS 1, DIVISION 1  
RATED)

<b>MENARD, INC.</b>				PROJECT TITLE GATE LEFT	
STORE PLANNING & CONSTRUCTION EAU CLAIRE, WISCONSIN				PROPANE TANK	
SCALE 1/4"=1'-0" UNLESS NOTED OTHERWISE				SHEET TITLE ELECTRICAL DIAGRAM	
REVISIONS				CAD DWG NAME YD-R2S-PONTIAC-MI	
NO.	DATE	DESCRIPTION		BY	SHEET NO.
1					PG-4
2					
3					



# GAS EQUIPMENT COMPANY, Inc.

— SINCE 1937 —

## Ferrellgas DCL51DP-Hybrid-Bare Dispenser

### Features:

- DCL51DP Large aluminum diamond-plate dispenser cabinet. Large enough to contain a Fairbanks 1,000# beam scale.
- Designed with same dimensions of Modular Skid Legs set: TL36 to mount from rear or either side if utilizing TL36 tank legs.
- Autogas 18' Fuel Hose Kit mounted internal of the cabinet: MFH-Standard (RegO A7793A Low Emission).
- Cylinder filling Hose Kit inside the cabinet and mounted upstream of the meter to comply with Weights & Measures regulations: CFH Standard.
- Red-Seal Measurement-Neptune 1" 4D Meter Neptune #600 Mechanical Register and Veeder Root pulsar, capable of integrating with FMS.



*Shown with LGL156 pump*

The DCL51DP-Hybrid-Bare Dispenser can incorporate various pump/motor combinations. The common non-HDP pump/motor assembly for joint cylinder filling and Autogas dispensing is the Blackmer LGRLF1.25 (1-1/4") pump with a 3HP motor.



### Available Options:

- DU-3Way, 3-way valve and components when using 2 delivery hoses downstream of the meter.
- DURESS Kit, manual cable-closer kit to trip the thermal latch of an internal valve.
- #1124, 1,000 beam scale for cylinder filling.



**Atlanta GA**  
1440 Lakes Pkwy, Suite 300  
Lawrenceville, GA 30043

**Kansas City MO**  
224 NW Plaza Drive  
Kansas City, MO 64150

**Dallas TX**  
11616 Harry Hines Blvd  
Dallas, TX 75229

**Little Rock AR**  
2711 Confederate  
Little Rock, AR 72206

**Fayetteville NC**  
1565 Wilmington Hwy  
Fayetteville, NC 28306

**Orlando FL**  
4520 36th Street  
Orlando, FL 32811

**Houston TX**  
11510 N. Petro Park  
Houston, TX 77041

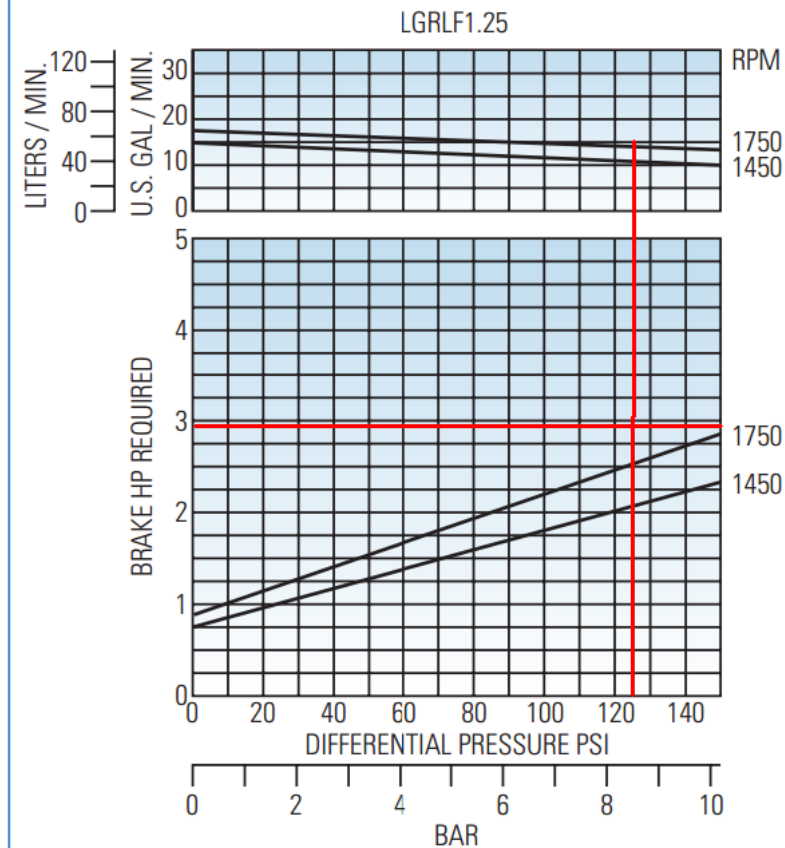
**Richmond VA**  
12660 Bermuda Triangle Rd  
Chester, VA 23836

**Indianapolis IN**  
3168 N. Shadeland Ave  
Indianapolis, IN 46226

**St. Louis MO**  
13789 Rider Trail N. #106  
St. Louis, MO 63045

[www.gasequipment.com](http://www.gasequipment.com)

## Performance Curves



*These curves are based on approximate delivery rates when handling propane at 80°F (26.7°C). Line restrictions such as excess flow valves, elbows, etc. will adversely affect deliveries. For propane at 32°F (0°C), actual delivery will be further reduced to about 80% of nominal. This loss of delivery is not a pump characteristic but is caused by natural thermodynamic phenomena of liquefied gases.*

The LGRLF1.25 can be powered by a three-phase motor (208-230/460V). Below is motor operating information.

3HP	Three-Phase
Voltage	208-230/460
Amps	8.0/4.0
Frame	182TC

### Wire Sizing for this motor

Volts	100 FT	150 FT	200 FT	300 FT	500 FT
<b>THREE-PHASE MOTOR</b>					
<b>460</b>	<b>12</b>	<b>12</b>	<b>12</b>	<b>12</b>	<b>10</b>

**This diagram is for the Blackmer LGRLF1.25 w/ 3HP, 3 phase motor ONLY**

WIRE SIZE for Three Phase Motors (460 volt) L1/L2 Conductors					
Horsepower	100 ft.	150ft.	200 ft.	300 ft.	>300 ft
3	#12	#12	#12	#12	Consult Manuals

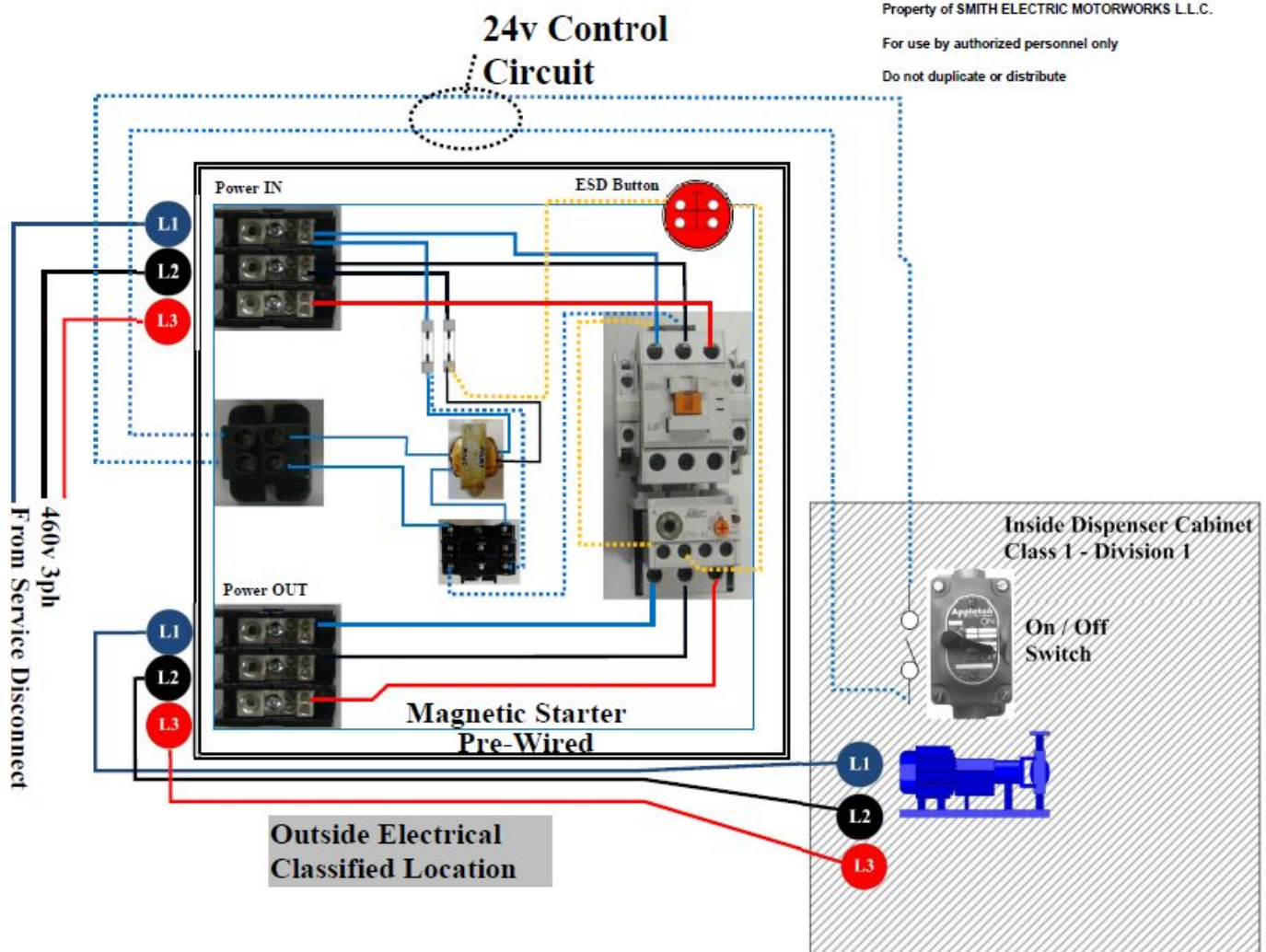
**WIRING DIAGRAM** using the available GEC Pre-Wired Magnetic Starter with enclosure and motor control relays & ESO Switch: (5 Leads: 3-line voltage conductors to motor & 2-On/Off switch conductors to switch.)

**NOTE:** CONSULT with a licensed electrician for your local regulatory compliance requirements.

#### Leaving Electrical Control Panel

#### Connects To

- |                      |                     |
|----------------------|---------------------|
| 1. L1 Line           | motor conductor     |
| 2. L2 Line           | motor conductor     |
| 3. L3 Line           | motor conductor     |
| 4. Blue dotted Line: | On/Off Switch (In)  |
| 5. Blue dotted Line: | On/Off Switch (Out) |







### Figure 1



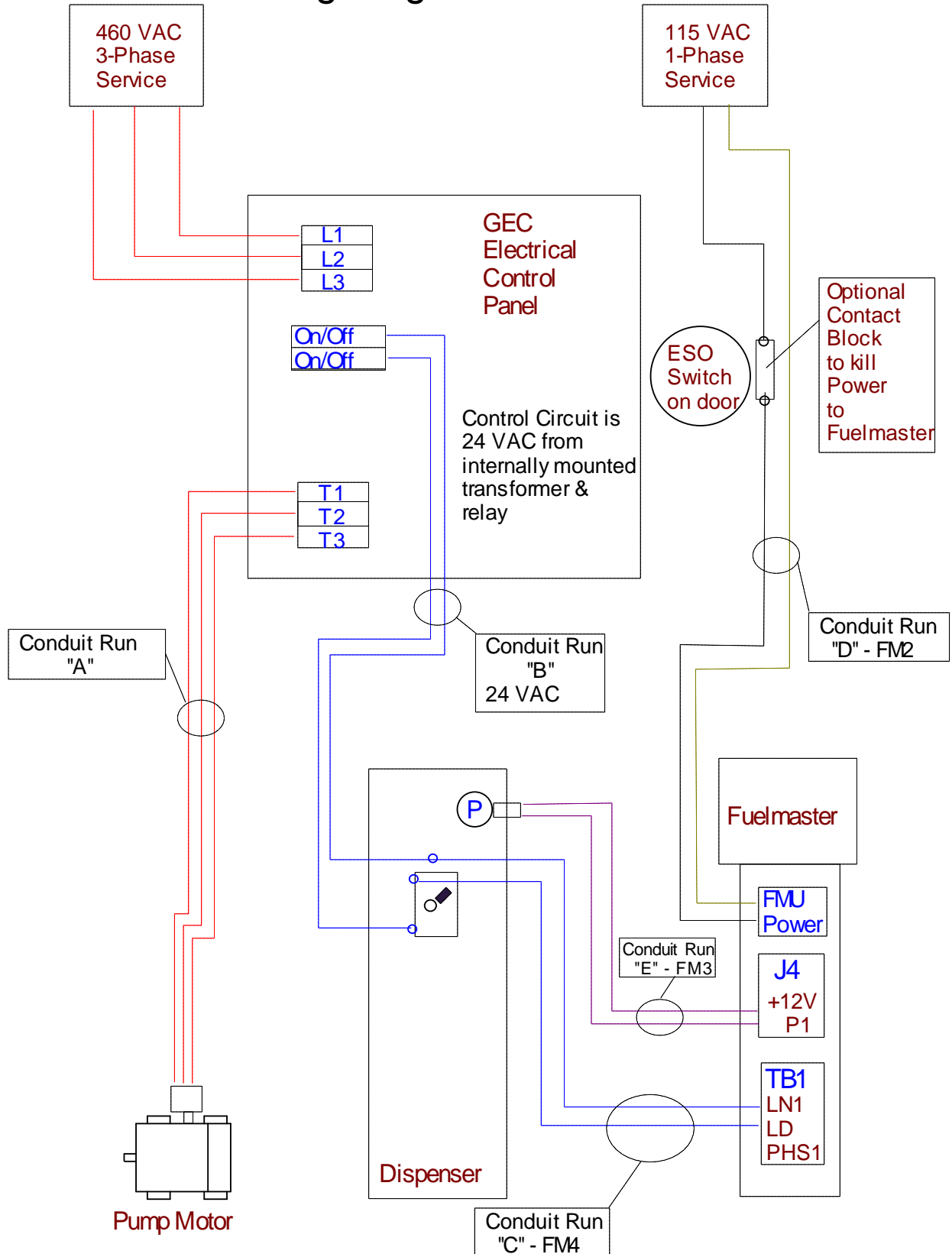
## Figure 2

**Figure 1:** Image shown is for single phase motor application; the three phase starter will be labeled for 3 incoming service conductors and 3 conductors to the motor; when wired for 460VAC the enclosure will incorporate an internally mounted transformer to drop line voltage from 460V to 24V low-voltage for control switch circuit.

**Fig 2:** Electrical Control Panel showing ESO Switch on Cover.



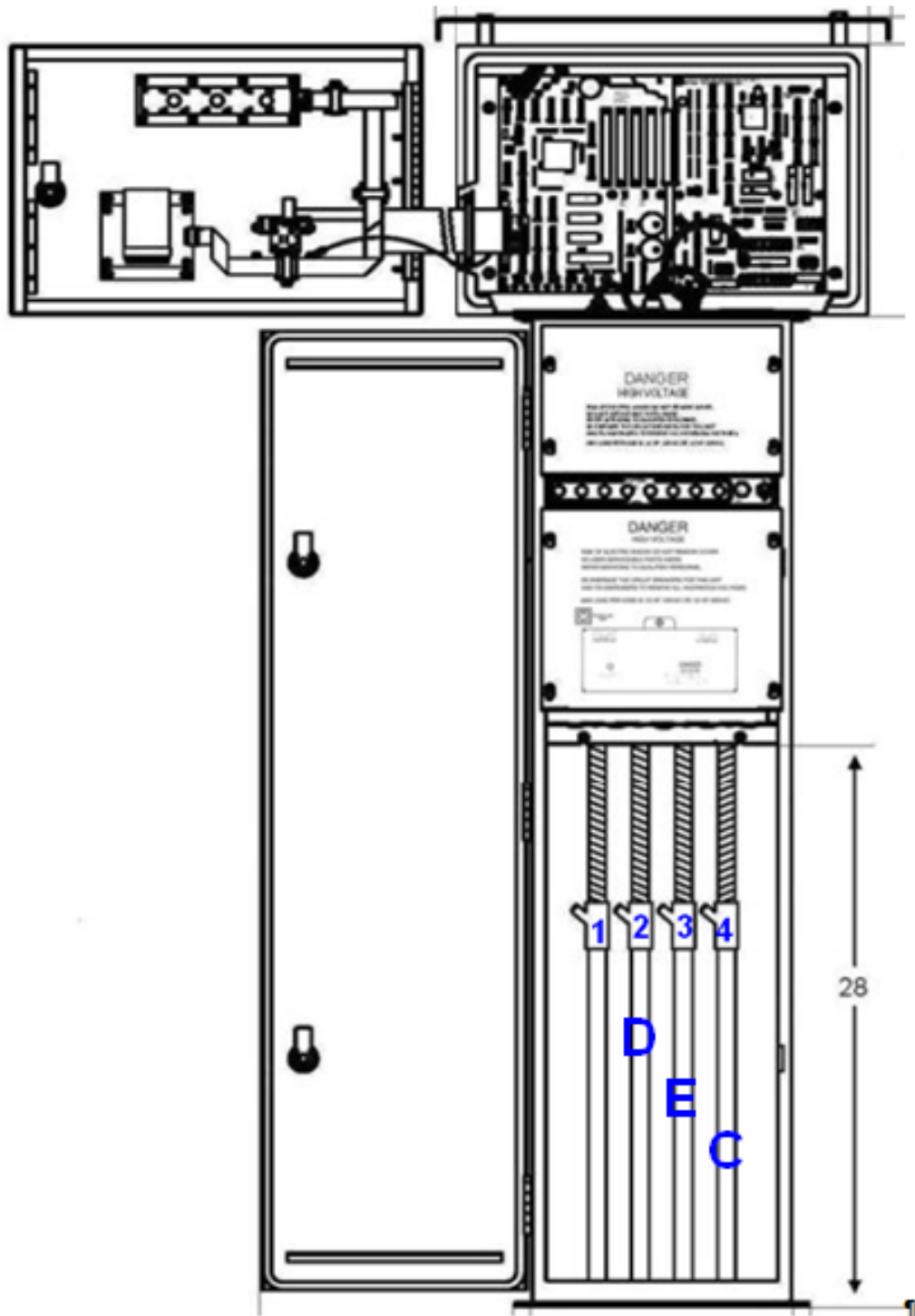
# GEC ECP Wiring Diagram w/ Fuelmaster Interface



## GEC ECP Wiring & Conduit Diagram w/ Fuelmaster Interface

Conduit Run	From	To	# & Size of Wires	Explanation
A	GEC Electrical Control Panel	Pump Motor	3 ea. Sized per distance chart	This is the motor conductors (3ea)(should be sized according to distance chart)
B	GEC Electrical Control Panel	Added J-box connected to Dispenser On/Off switch on wire-in side	2 ea. #12	This is the motor starter control circuit wires (2ea) to the On/Off switch. The hot wire from ECP ties to LN1 wire from Fuelmaster. The other ties to first pole, bottom lug of On/Off switch
C –FM-4	Added J-Box on Dispenser at On/Off Switch	Fuelmaster	2 ea #12?	On/Off switch relay (2ea wires) from Fuelmaster once security has been satisfied. First one to LN1 from ECP, 2 <sup>nd</sup> from LD to first pole, top lug of On/Off switch. NOTE: In lieu of using PHS1 for pump handle interrupt – use Fuelmaster timer to end transaction.
D -FM-2	120V-1PH Service	Fuelmaster	3 ea. #12?	Fuelmaster dedicated power supply (3ea) from an auxiliary circuit breaker panel mounted at the ECP at the service supply.
E –FM-3	Meter Pulsar	Fuelmaster	3 ea. #18	This the pulsar input circuit from the meter pulsar tot the Fuelmaster
F –FM-1	?	Fuelmaster	?	This is the Fuelmaster phone line or Cat 5 network

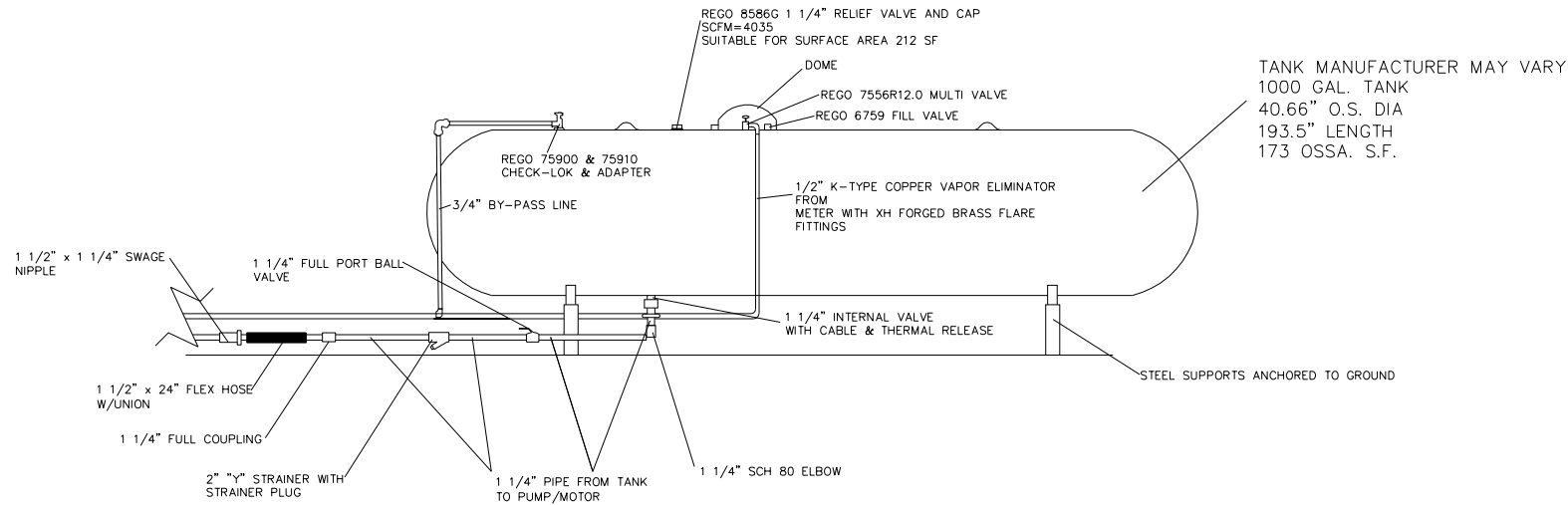




Conduit-Run	Purpose
1	Phone-Line-or-Cat-5-Network
2-D	120VAC-power-in-(3-ea.-#12)
3-E	Pulsar-wire-to-pulsar-Belden-8723
4-C	Control-wires-(3-ea.-#12)

TANK AND ALL GAS PIPE  
INSTALLED BY GAS COMPANY.

- GENERAL NOTES:
- MOST PARTS CAN BE FOUND LPG & NH3 CATALOG. THESE PARTS OR THEIR EQUIVALENT DEPENDING ON AVAILABILITY WILL BE USED.
  - ALL PIPING IS THREADED SCH 80 SEAMLESS 0-106-B
  - ALL THREADED PIPE FITTINGS SUCH AS UNIONS, ELBOWS, TEES, ETC. ARE FORGED STEEL 2000# RATED OR STRONGER.
  - SIGNAGE WILL INCLUDE-NO SMOKING, PROPANE, HAZMAT WARNING DECALS, DISPENSING INSTRUCTIONS, AND EMERGENCY CONTACT INFORMATION.
  - EMERGENCY CABLE PULL AND EMERGENCY ELECTRICAL SWITCH WILL BE DESIGNATED WITH SIGNS ALSO.
  - AREA IS WELL LITE WITH EXISTING PARKING LOT LIGHTS.
  - METER WILL BE PROVED & REGISTERED WITH STATE.
  - INSTALLATION WILL COMPLY TO NFPA 58 & 70 AND ALL STATE AND LOCAL CODES.



SIDE VIEW OF TANK  
NOT TO SCALE

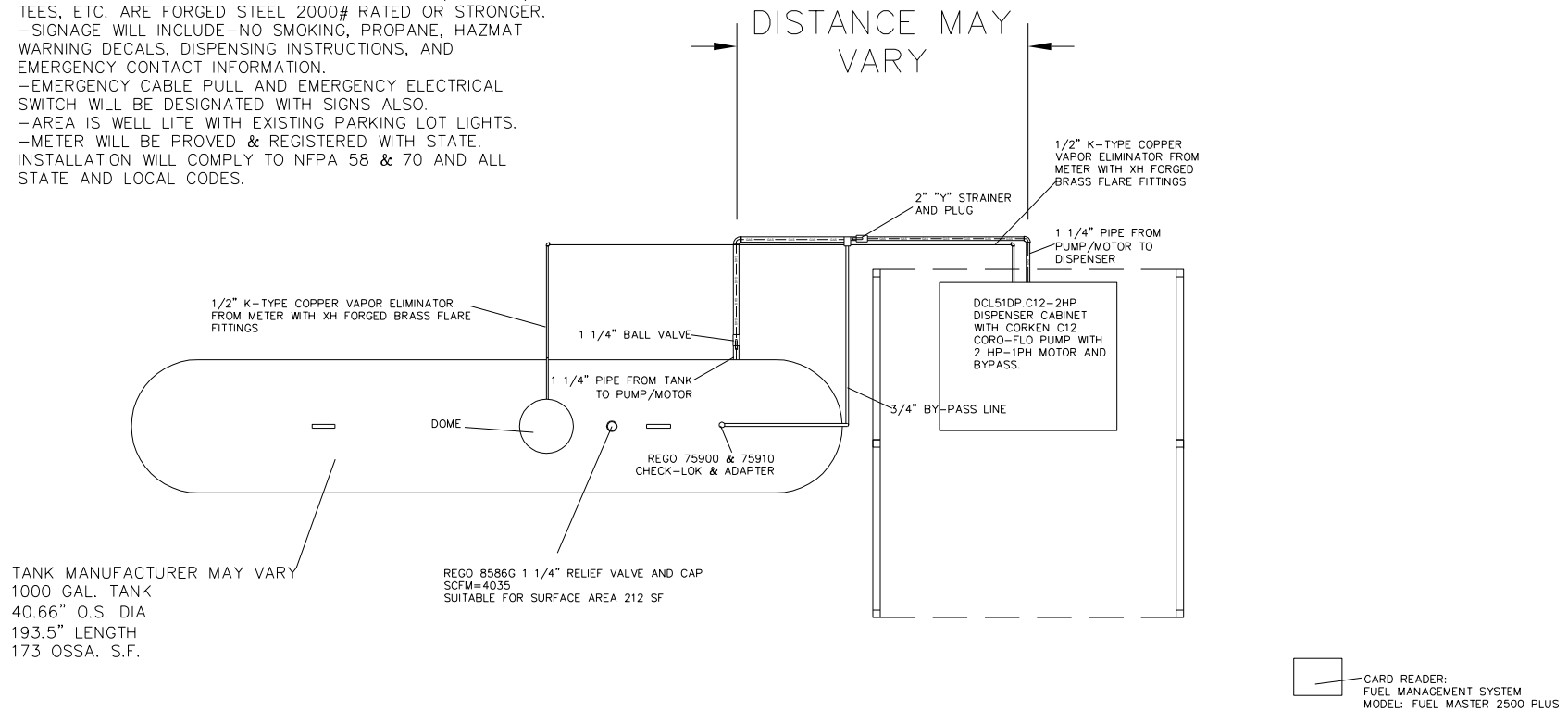
<div>MENARD, INC</div> <div>STORE PLANNING DEPT. EAU CLAIRE, WI</div>	PROJECT	NO.	DATE	BY	SCALE	CAD DWG DETAIL AND SIGN PAGES
	PROPANE TANK				1 1/4"=1'-0"	
	SHEET				BY BPS	
	SIDE VIEW SPECS				DATE 7/20/15	
		1				DWG NO.
		2				SPECS
		3				



GENERAL NOTES:

- MOST PARTS CAN BE FOUND LPG & NH3 CATALOG. THESE PARTS OR THEIR EQUIVALENT DEPENDING ON AVAILABILITY WILL BE USED.
- ALL PIPING IS THREADED SCH 80 SEAMLESS O-106-B
- ALL THREADED PIPE FITTINGS SUCH AS UNIONS, ELBOWS, TEES, ETC. ARE FORGED STEEL 2000# RATED OR STRONGER.
- SIGNAGE WILL INCLUDE-NO SMOKING, PROPANE, HAZMAT WARNING DECALS, DISPENSING INSTRUCTIONS, AND EMERGENCY CONTACT INFORMATION.
- EMERGENCY CABLE PULL AND EMERGENCY ELECTRICAL SWITCH WILL BE DESIGNATED WITH SIGNS ALSO.
- AREA IS WELL LITE WITH EXISTING PARKING LOT LIGHTS.
- METER WILL BE PROVED & REGISTERED WITH STATE.
- INSTALLATION WILL COMPLY TO NFPA 58 & 70 AND ALL STATE AND LOCAL CODES.

TANK AND ALL GAS PIPE  
INSTALLED BY GAS COMPANY.



TOP VIEW OF TANK AND DISPENSER  
NOT TO SCALE

**MENARD, INC**  
STORE PLANNING DEPT.  
EAU CLAIRE, WI

PROJECT  
**PROPANE TANK**  
SHEET  
**TOP VIEW SPECS**

NO.	DATE	BY	SCALE	CAD DWG
1			1/4"=1'-0"	DETAIL AND SIGN PAGES
2			BY BPS	DWG NO.
3			DATE 7/20/15	<b>SPECS</b>

**NOTES:**

1. ALL STRIPING PAINT TO MEET STATE D.O.T. SPEC'S AND LOCAL CODES.
2. ENTIRE AREA TO BE STRIPED SHALL BE AIR BROOMED AND CLEANED OF ALL DEBRIS AND COMPLETELY DRY PRIOR TO PAINTING.
3. PARKING LOT STRIPING TO BE AS INDICATED ON PLAN (TO MEET ALL STATE AND LOCAL CODES).
4. ALL STRIPING TO BE YELLOW UNLESS OTHERWISE NOTED.
5. PRECAST BASES OF LIGHT POLES IN PARKING LOT OR NON-CURBED AREAS ONLY TO BE PAINTED YELLOW.
6. ANY ADDITIONAL SIGNAGE AND/OR CURB STRIPING REQUIRED BY AUTHORITY HAVING JURISDICTION WILL BE SUPPLIED AND INSTALLED BY CONTRACTOR.
7. ALL DIMENSIONS ARE TO FACE OF CURB OR CENTER OF PAINT STRIPE.

**8. PROPANE FILLING AREA STRIPING REQUIREMENTS:**

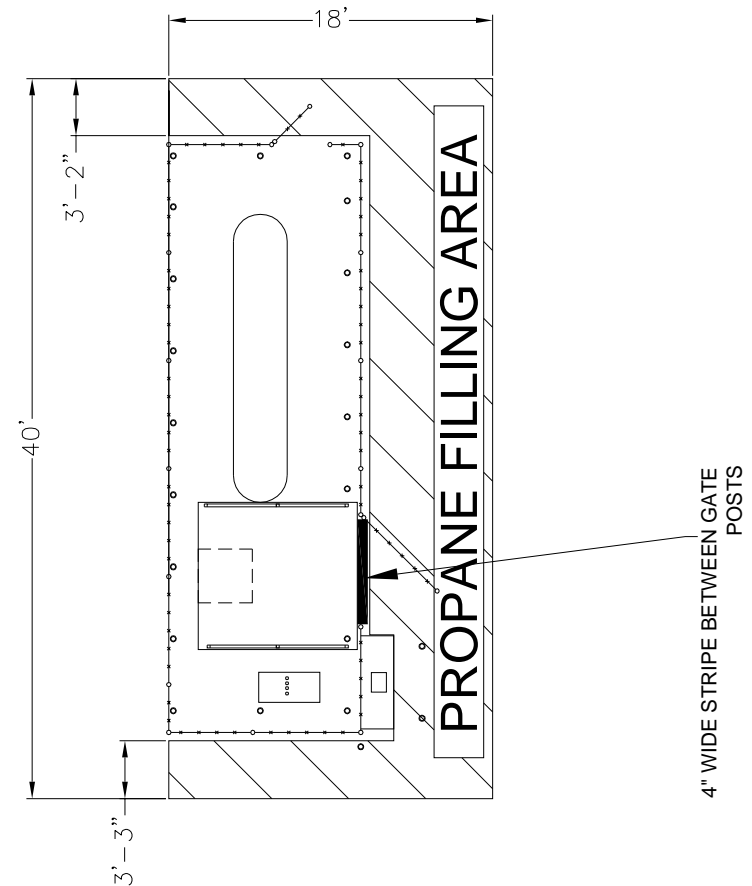
-PROPANE FILLING AREA STRIPING TO BE PAINTED YELLOW.  
4" WIDE STRIPES AT 3'-0" APART AT A  
45 DEGREE ANGLE AS SHOWN.

-STENCIL THE WORDS  
"PROPANE FILLING AREA"  
LETTERS TO BE 2' TALL CENTER LETTERING  
ON STRIPED AREA  
STRIPING SHOULD STOP 6"  
OFF OF CHAINLINK FENCE

-THE STRIPING SHOULD COVER EXISTING  
PARKING STALES. FILL IN  
CURB RETURN AREAS WHERE REQUIRED.

-BLACK OUT EXISTING PARKING STRIPING.

SEE PLAN PG-1 FOR LOCATION OF STRIPING.



LEFT GATE

**MENARD, INC.**  
STORE PLANNING DEPT.  
EAU CLAIRE, WI

PROJECT  
**PROPANE FILLING AREA**  
SHEET  
**STRIPING AND STENCIL DETAIL**

NO.	DATE	BY	SCALE	CAD DWG
1			3/32"=1'-0"	DETAIL AND SIGN PAGES-2016
2			BY BPS	DWG NO.
3			DATE 3/12/16	<b>S-1</b>



## FRONT ELEVATION SIGN LAYOUT

CONTRACTOR TO MOUNT ALL SIGNS TO CHAINLINK FENCE WITH BLACK ZIP TIES AT GIVEN LOCATIONS BELOW UNLESS NOTED. SIGNS MUST BE LEVEL.

SIGN A: 24 HOUR SURVEILLANCE 24"x6"

INSTALL 4" FROM CORNER AND TOP OF FENCE.

SIGN B: CYLINDER REFILL 24"x48"

INSTALL 12'-0" FROM RIGHT CORNER OF FENCE AND 5'-8" OFF GROUND.

SIGNS C AND D ARE ON INSIDE OF GATE.

SIGN C: SCALE SIGN 11"x14"

INSTALLED 2'-2" FROM OUTSIDE POST OF GATE AND 1'-4" FROM TOP RAIL TO BOTTOM OF SIGN.

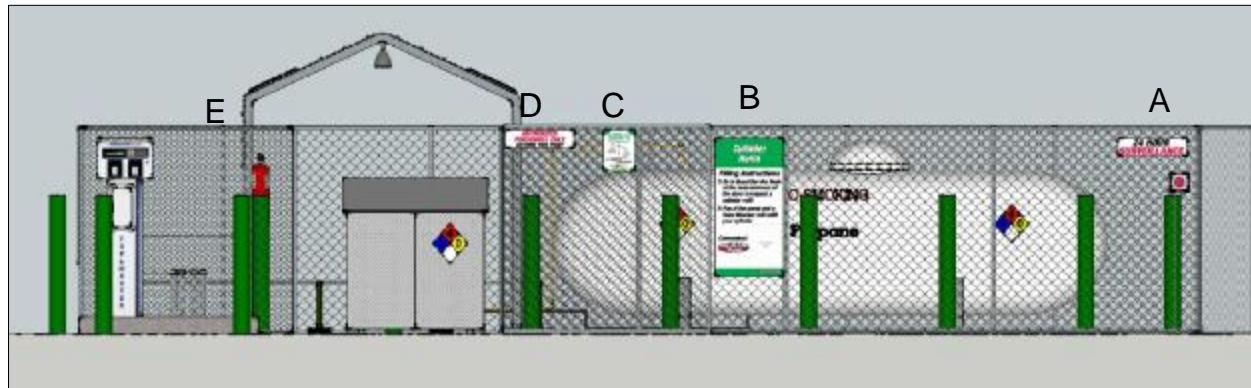
SIGN D: AUTHORIZED PERSONNEL ONLY 24"x6"

INSTALL 2" FROM CORNER OF INSIDE POST AND TOP POST OF GATE

SIGN E: FIRE EXTINGUISHER SIGN 4"x18"

MOUNT TO VERSATUBE FRAME WITH SELF TAPING SCREWS ABOVE FIRE EXTINGUISHER. MOUNT AS HIGH AS POSSIBLE

ALL OTHER SAFETY SIGNS INSTALLED BY OTHERS.



PICTURE FOR REFERENCE ONLY  
NOT TO SCALE

(300-325) LEFT SIDE GATE(2)

**MENARD, INC**

STORE PLANNING DEPT.  
EAU CLAIRE, WI

PROJECT

**FRONT ELEVATION**

SHEET

**SIGN DETAIL**

NO.	DATE	BY	SCALE	CAD DWG
1	3/12/16	BPS	1/16"=1'-0"	DETAIL AND SIGN PAGES-2016
2			BPS	DWG NO.
3			DATE 7/20/15	<b>300-325</b>

## END ELEVATION SIGN LAYOUT

CONTRACTOR TO MOUNT ALL SIGNS TO CHAINLINK FENCE WITH BLACK ZIP TIES AT GIVEN LOCATIONS BELOW UNLESS NOTED. SIGNS MUST BE LEVEL.

**SIGN F:** PROPANE FILL STATION 96"x48"

INSTALL CENTERED ON FENCE AND 2" FROM TOP OF FENCE.

**DECAL G:** PROPANE DECAL TO BE INSTALLED ON EDGE OF VERSATUBE ROOF STEEL(BOTH SIDES). DECAL SHOULD BE CENTERED ON ROOF AND WRAP AROUND CURVED EDGE SO THE BOTTOM OF THE DECAL IS AT 7'-1" A.F.F. ON BOTH SIDES. CLEAN ROOF STEEL BEFORE INSTALLING DECAL.

ALL OTHER SAFETY SIGNS INSTALLED BY OTHERS.



PICTURE FOR REFERENCE ONLY  
NOT TO SCALE

**MENARD, INC**

STORE PLANNING DEPT.  
EAU CLAIRE, WI

PROJECT

**LEFT END ELEVATION**

SHEET

**SIGN DETAIL**

NO.	DATE	BY	SCALE	CAD DWG
1	3/12/16	BPS	1/16"=1'-0"	DETAIL AND SIGN PAGES-2016
2			BPS	DWG NO.
3			DATE 7/20/15	<b>300-325</b>

(300-325) LEFT SIDE GATE(3)

# BACK ELEVATION SIGN LAYOUT

CONTRACTOR TO MOUNT ALL SIGNS TO CHAINLINK FENCE WITH BLACK ZIP TIES AT GIVEN LOCATIONS BELOW. SIGNS MUST BE LEVEL.

SIGN H: 24 HOUR SURVEILLANCE 24"x6"

INSTALL 4" FROM CORNER AND TOP OF FENCE.

ALL OTHER SAFETY SIGNS INSTALLED BY OTHERS.



NOT TO SCALE

(300-325) LEFT SIDE GATE(4)

**MENARD, INC**

STORE PLANNING DEPT.  
EAU CLAIRE, WI

PROJECT

**BACK ELEVATION**

SHEET

**SIGN DETAIL**

NO.	DATE	BY	SCALE	CAD DWG
1	3/12/16	BPS	1/16"=1'-0"	DETAIL AND SIGN PAGES-2016
2			BY BPS	DWG NO.
3			DATE 7/20/15	<b>300-325</b>





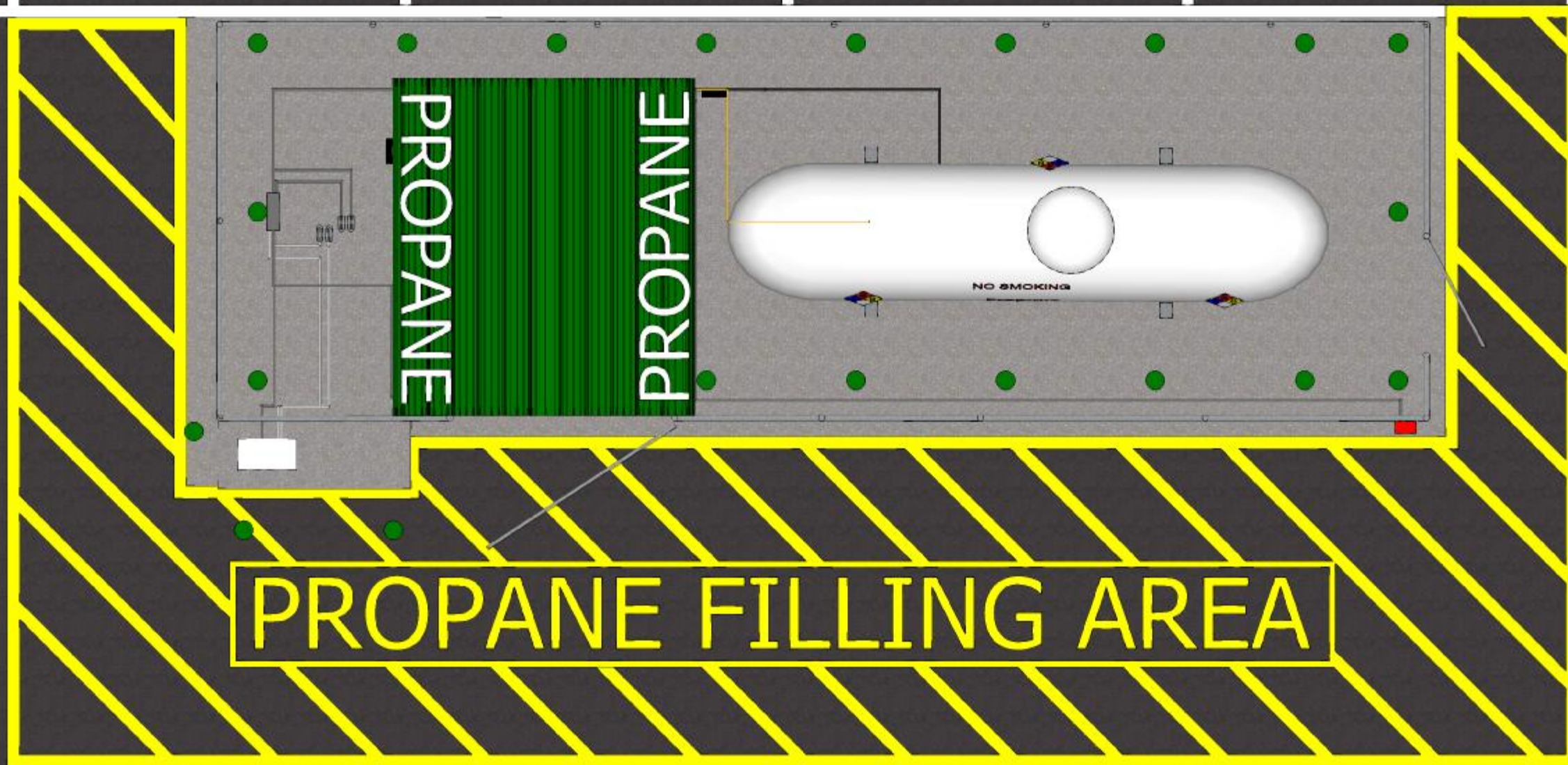






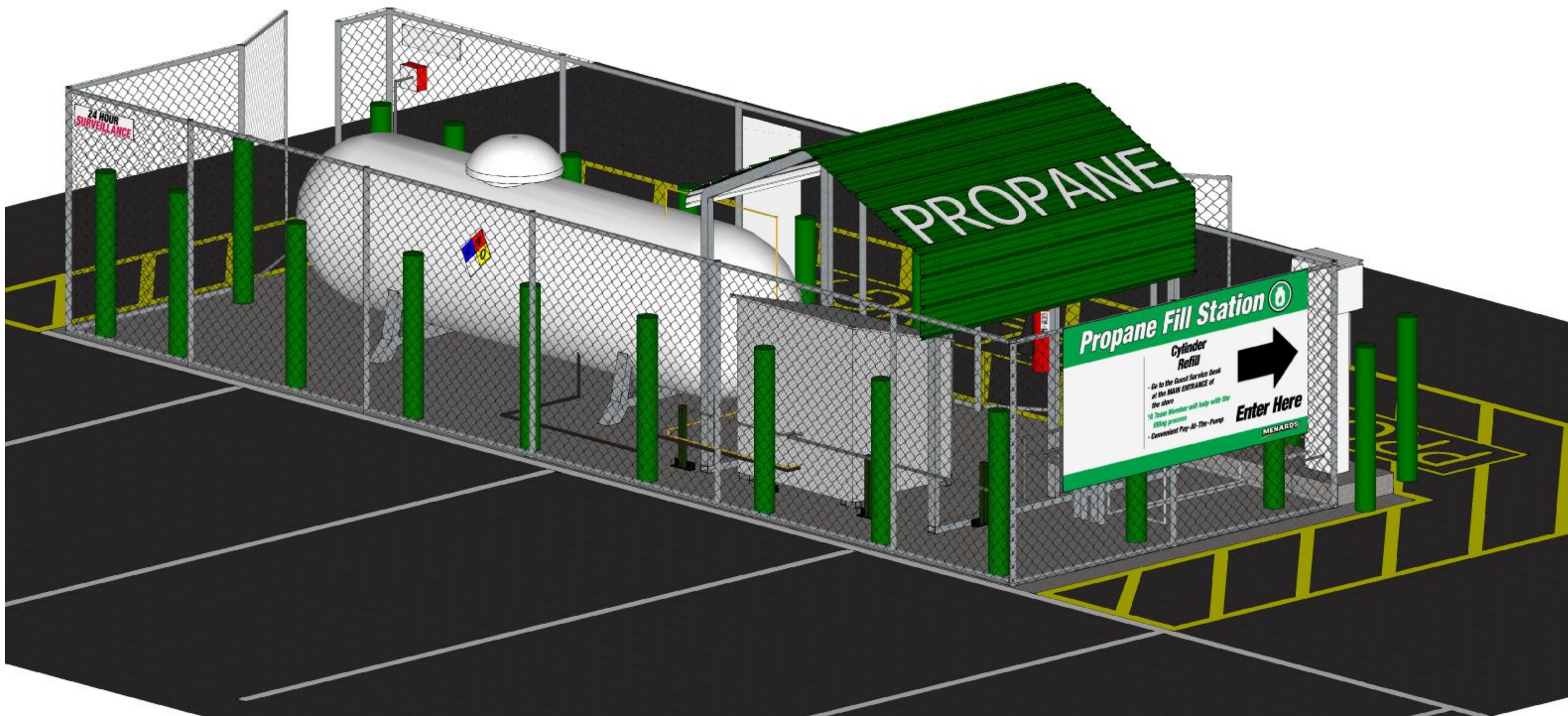






PROPANE FILLING AREA







# PROPANE

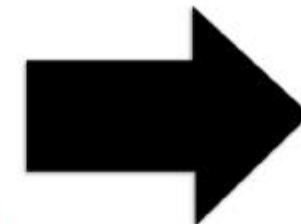
## Propane Fill Station

### Cylinder Refill

- Go to the Guest Service Desk at the MAIN ENTRANCE of the store

*\*A Team Member will help with the filling process*

- Convenient Pay-At-The-Pump



### Enter Here

**MENARDS**

AUTHORIZED  
PERSONNEL ONLY  
KEY





